

Secure Relationships

- A curriculum that is underpinned by promoting social connection
- Children are happy and confident and feel recognised, valued and part of our school
- Clear routines and boundaries with consistency
- Behaviour is seen as a form of communication (or unmet need)
- Children can express feelings and are supported to manage them when needed
- Families feel valued and involved in their child's education



Early Years Pedagogical Principles

Communication at the heart of all we do

- A curriculum that promotes gaining the skills to understand, express thoughts, feelings, and information
- To know every interaction counts
- Adults listening and responding to children
- Communication friendly spaces (book corners, role play)
- Adults modelling think out loud - thought process
- New and exciting vocabulary is introduced and used everyday



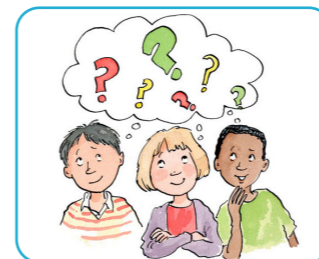
Enabling Learning Environment

- A curriculum that fosters an emotional environment, the indoor environment and the outdoor environment
- Continuous provision is well set-up and organised to enable learning
- Outdoor learning is big, bold and different
- Adults are engaging with children



Meaningful Learning

- A curriculum that understands effective learning must be meaningful to a child, so that they are able to use what they have learned and apply it in new situations.
- Learning experiences are well planned to build on previous knowledge, support children to make links in their learning and based on child development
- Learning is adapted to build on children's needs, interests, fascinations and life experiences
- Stories and Rhymes support children's learning
- Children's play is encouraged and built on
- Family learning is based on real experiences, everyday home routines and games together



High Expectations

- Ambitious curriculum - Learning is based on what children need to know now to help them be ready for the future
- We see the potential in all children
- Independence is encouraged and scaffolded when needed
- Planned opportunities for adult guided and child led throughout the day
- Families understand the role they have in supporting their child's education and opportunities they have to help their child learn at home and in everyday activities

