

Whitchurch Primary School and Nursery

Year 4 Meet the Teacher

September 2025



Our Vision



The Whitchurch family rests at the very heart of everything we do, celebrating our uniqueness and building on our community's strength. We support our children to become confident, resilient and socially responsible global citizens who set and achieve the highest standards for themselves. We work in partnership with the whole community, respecting and responding to its voice and valuing its diversity. Our school provides a broad and rich curriculum that engages each and every child to know more, remember more and aspire for more.

'Learners today, leaders tomorrow'



Our Mission: During every school day...

- Children thrive with our broad and rich curriculum that inspires and motivates a love of lifelong learning and achievements.
- We plan stimulating learning experiences, inside and outside of school, where children practise, develop and apply new skills, knowledge and understanding.
- Children build values that will help support their confidence and their resilience in life beyond the school gate.
- Our whole community is happy, safe, secure and supported in learning together.
- The school community celebrates the importance of its cultural diversity, learning from one another in order to grow and develop together.



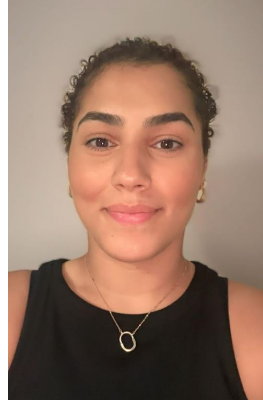
'Learners today, leaders tomorrow'



Year 4 Team



Miss Hogberg
Head of Year



Miss Aid



Ms Khan



Miss Liu



Miss Samji



Mr Orford



Ms Kamaei



Ms Parthasarathy



Whitchurch Core Values

Respect

We show respect for those around us, the diversity of our community and for our environment

Responsibility

We take responsibility for our learning, our behaviour and the choices we make

Honesty

We are honest with ourselves and others

Aspiration

We continually strive to be the best we can be

Generosity

We are generous in our words and actions

Resilience

We are resilient to the challenges we face daily

'Learners today, leaders tomorrow'



Pick up and Drop off times



Morning drop off:

Children should be dropped at either main gate or Marsh Lane which are opened at around **8.35am**. We have a 'soft start' which means children can arrive from **8.35am until 8:55am** when the gates are locked. After that time children are registered as late and should report to the main school office.

Afternoon collection:

Learning time finishes at **3.25pm** and parents/carers need to wait patiently at the patio door. Sometimes it might be a few minutes later. If you want to speak to the teacher please wait until we have dismissed all other children (the handing over of children is our priority at the end of the day).

'Learners today, leaders tomorrow'



Attendance and Punctuality

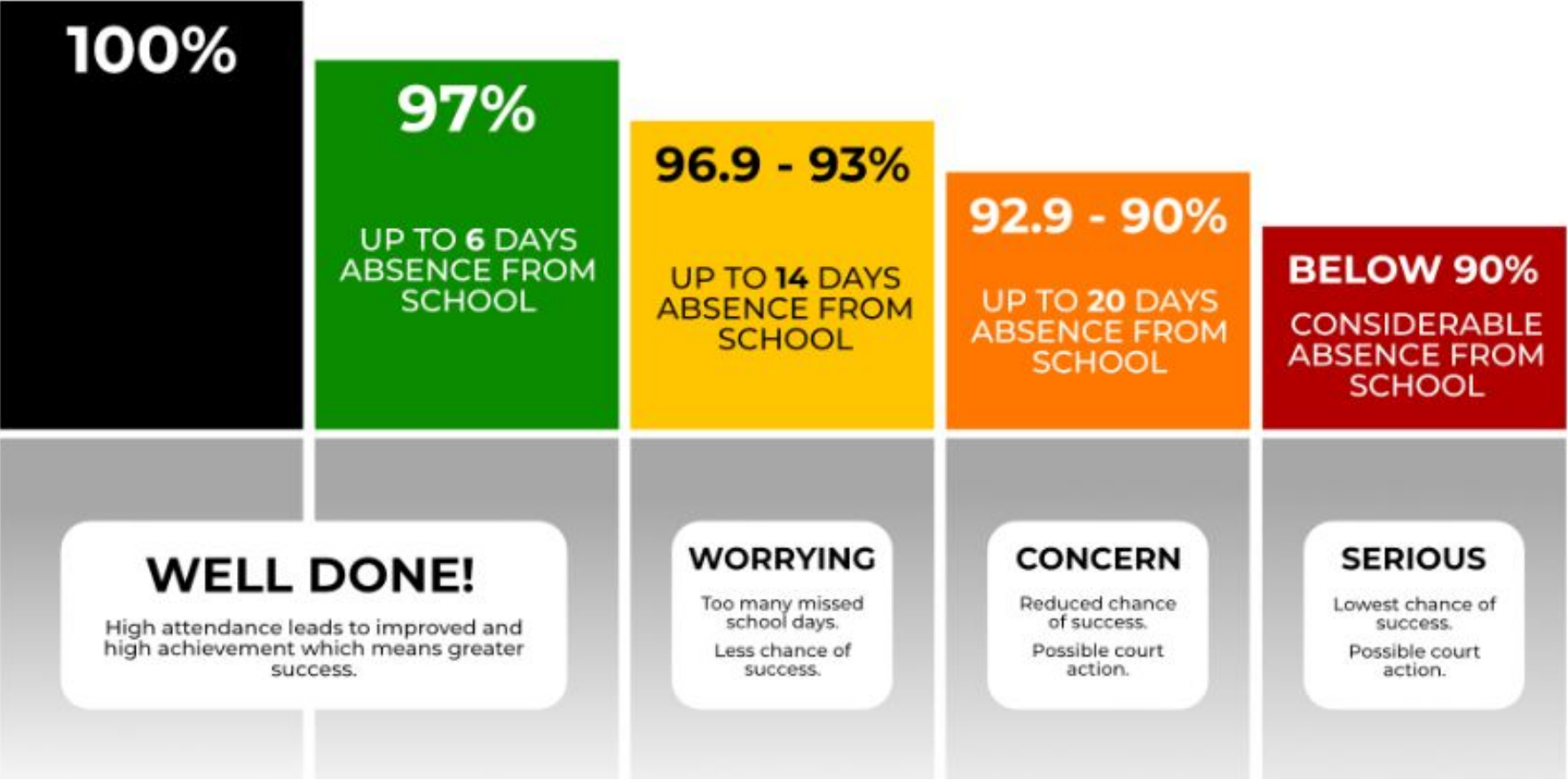


- Daily attendance at school is of the **utmost importance**.
- Please ensure that your child is always on time:
 - The school gates open at around 8:35am
 - Children are expected to be punctual in the morning so that they do not miss the morning routine / challenges
- **Please do not book holidays during term times** – these **will not be approved** and your child will have these days recorded as unauthorised
- As much as possible, please ensure you book appointments outside of school day

'Learners today, leaders tomorrow'



Attendance and Punctuality



'Learners today, leaders tomorrow'



Booking School Meals

We strongly recommend a hot school meal in the middle of the day. Children are supported in the hall and we ensure they are encouraged to eat and try new things

Kindly book for the full half term through ParentPay. We have bands which are given to the children in the morning. The colour is dependent on your child's choice of food:

Red: meat and fish option

Green: vegetarian options

Yellow: vegan or alternative option



Packed lunches are discouraged for a number of reasons;

- Difficult to ensure a healthy balance of all the essential food groups;
- We have a number of children with extremely serious allergies and have to be strict about the food coming into school;
- It's more difficult for us to monitor what children are eating;
- We may replace any packed lunch that is not compliant with our lunch policies (we will of course advise parents of our concerns).

'Learners today, leaders tomorrow'



Healthy Eating

If your child has packed lunches, please refer to this nutritional guidance

Whitchurch
Primary School and Nursery

Packed Lunch Guidance

Everyday:

- 1 portion of fruit
- 1 portion of vegetables
- 1 portion of protein (to help you grow and stay healthy)
This includes: meat, fish, chickpeas, lentils, kidney beans, falafel, hummus.
- 1 portion of starchy food (for energy!)
This includes: potatoes, pasta, bread, rice, couscous, noodles, cereals.
- 1 portion of dairy (to build up strength)
This includes: milk, cheese, yoghurt, fromage frais, custard.

Once a week:

- Source of Omega (to help your overall health)
This includes: oily fish, flaxseeds, chia seeds, soy beans, kidney beans.

Drink:

- Only water, milk or yoghurt drinks

You can have healthy treats in your lunch – but eat these after everything else!

Fridays Only:

- Chocolate bars
- Crisps
- Processed Food: sausage rolls, pies, corned meat/sausages



- NO NUTS
- NO FIZZY DRINKS
- NO FAST FOODS (burgers, chips, McDonalds, KFC etc)

Key Information: School Uniform

- We ask that your child always has on a clean uniform;
- Red sweatshirt or cardigan (with or without school logo);
- White polo shirt (with or without school logo);
- Dark grey trousers, skirt or pinafore dress / red and white dress for the summer;
- Smart black school shoes;
- Shirts should be tucked in **at all times**;
- If your child has shoe laces for either their school shoes or PE shoes, please ensure you are teaching them how to tie them if they do not know already;
- Now that we have rainier days, please ensure that your child has a rain mac or coat;
- Please ensure all uniform and PE items are **labelled so they can be easily identified**.

'Learners today, leaders tomorrow'



Key Information: Physical Education

PE Days

Year 4:

4RS- Monday and Tuesday

4HH, 4AK, 4XL- Tuesday and Wednesday

PE kits

Children come to school in their P.E. kit:

- Coloured t-shirt (with or without school logo) - depending on team colour
- Black shorts
- Grey sweatshirt – outdoors
- Grey tracksuit bottoms – outdoors
- We ask that a sweat band is provided to cover a Sikh wrist band.
- No other jewellery is allowed. (Earrings must be removed / covered in masking tape.)
- Long hair should be tied up.
- Please cover verrucas with a plaster or provide a verruca guard (socks are not allowed during indoor PE due to slipping)

'Learners today, leaders tomorrow'



Key Information - Stationery

Stationery: Please ensure that your child has everything they need for the day.

We have a pop-up stationery shop run by the Year 6 children, every Wednesday at lunch time. The list is as follows:

- Pencil case
- 2 pencils
- Writing pen in **blue**
- Pencil sharpener
- 30cm clear ruler
- Glue stick
- Children's safety scissors
- Green pen (biro)
- **Highlighters- a few different colours (ideally not green or pink)**
- Colouring pencils
- Dry wipe board pen

'Learners today, leaders tomorrow'



Y6 run the Stationery shop weekly on Wednesdays at lunchtime.



Key Information - Reading

Reading – Children in Year 4 are working on their reading stamina, pace and understanding. Children need to read **with an adult** for a minimum of 20 minutes a day (BUG CLUB) or their reading book (matched level and free choice - as per the home learning policy).

This is so that they **can ask and answer questions**, work on their **decoding** and **vocabulary skills** and **to ensure they are not skipping through words, phrases, sentences and paragraphs that they do not understand**. This cannot be achieved when reading to one's self (this is 'reading for pleasure' and encourages a life-long love of reading.)

When you have read with your child, they need to log the name of the book, pages read and a **reflection** of what they have read in the diary and it will need an adult signature. Diaries are checked by the teacher every **Monday**.

Children should bring their dairies to school **every day** so they can start to log important messages and information.

'Learners today, leaders tomorrow'

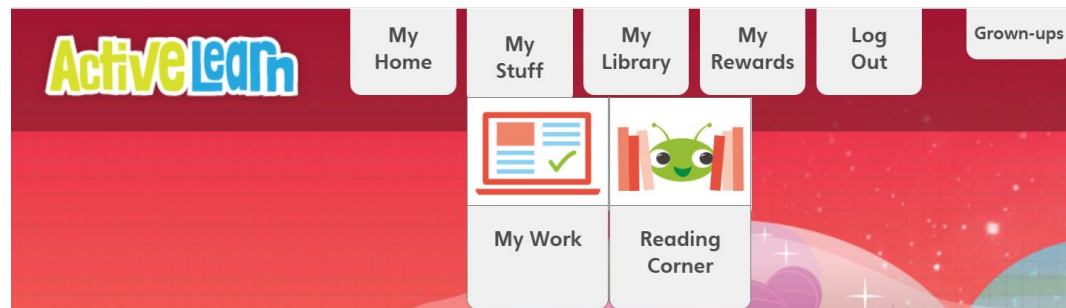


Key Information - Reading



Bug Club is an online reading platform used to support children's reading at home. Pupils are expected to log in regularly to read books assigned to their account and complete the short comprehension questions. Teachers can monitor progress and engagement through the platform.

In KS2, pupils can login and click on '*My Work*' to read books allocated to them by their class teacher. They can also click on '*Reading Corner*' to explore a range of online books to enjoy either independently or with an adult.



Key Information - Reading



Why Can't I Skip My 20 Minutes of Reading Tonight?

Student "A"
reads **20 minutes**
each day

3600 minutes in
a school year

1,800,000 words



Student "B"
reads **5 minutes**
each day

900 minutes in
a school year

282,000 words



Student "C"
reads **1 minute**
each day

180 minutes in
a school year

8,000 words



Whitchurch's Recommended Reading List

Year 4

- Launching in Autumn 2 (if enough books are secured)
- High-quality texts for children to read and enjoy at home to develop a love of reading
- A range of 'challenges' for children to complete after reading (for example, design a new front cover, write a review)
- Pupils then work towards Bronze, Silver, Gold and Platinum certificates depending on how many books and challenges they have read and completed



- Please scan the QR code to purchase books and support our reading initiative.
- Books can also be bought elsewhere, or donated if you already have them at home in good condition.
- The wish list is also linked in the **Whitchurch Weekly Newsletter**.

Key Information - Diaries

Please encourage your child to be responsible and independent.
They need to have their diaries on a Monday morning completed with a reflection about the part of the book they've read.



Week Beginning: 2nd September 2024

Week: 1

Subject	Details – Monday 2nd	✓

Subject	Details – Tuesday 3rd	✓

Subject	Details – Wednesday 4th	✓

The most effective way to do it, is to do it.
Amelia Earhart

10

September

M	T	W	T	F	S	S	M	T	W	T	F	S	S	M	T	W	T	F	S	S							
2	3	4	5	6	7	8	9	10	11	12	13	14	15	16	17	18	19	20	21	22	23	24	25	26	27	28	29

Subject	Details – Thursday 5th	✓

Subject	Details – Friday 6th	✓

Teacher's/Tutor's signature

Parent's/Carer's signature

Weekend	Notes

11

This needs all the evidence of reading and to be signed **by an adult**.















Key Information - Home Learning



Year 4 Home Learning Autumn 1

This half term, children are invited to complete a range of home learning tasks linked to the curriculum and the learning taking place in class. While you are welcome to complete as many tasks as you like, we ask that you complete at least three tasks across different subjects, for example, one English, one Maths, and one from another area of the curriculum.

Home learning is due in the week beginning **[13th October]**, when children will have the opportunity to share their work with peers and teachers across the year group and receive feedback. Tasks can be completed in home learning exercise books or in any format you prefer.

English	Maths	Other Curriculum Subjects
 <p>To read at least 3 different types of poems and complete a poetry review for your favourite one: Suggested poems: 1. Haiku 2. Rhyming poem 3. Shape poem</p>	 <p>Can you draw a place value chart to 1000? Use a dice to roll five four-digit numbers. Place them in the place value chart.</p>	 <p>Science: States of Matter Hunt- Can you look around your house and local area to find examples of solids, liquids and gases. Draw them and describe how you know they are either a solid, liquid or gas.</p>
 <p>To write a poem from the list above about yourself or your favourite topic: e.g. a shape poem about football, animals or a rhyming poem about you.</p>	 <p>Investigate what a Gattegno chart is. Demonstrate how it can be used?</p>	 <p>A day in the Life: Then and Now. Research what a typical day was like for a Tudor or Victorian child. Then, write a short diary entry as if you were that child. Next to it, write a diary entry about your own day.</p>
 <p>To write a character description about your favourite book or movie character using: a) Expanded noun phrases b) Similes c) Alliteration</p>	 <p>Can you create a board game for 2 or more players involving two dice and some counters? What are the rules? How are the points calculated?</p>	 <p>Art: How many different ways can you hold a pencil to make a mark and patterns?</p>
 <p>Create a poster to explain the rules for starting a new paragraph when you write. Can you give an example?</p>	 <p>Recite three of your times tables rapidly (within 6 seconds).</p>	 <p>Gymnastics- Movement skills: Can you practice using your body to make different shapes?</p>

Useful websites and resources

- [Sound - KS2 Science - BBC Bitesize](#)
- [The Poetry Shed - THE LITERACY SHED](#)
- [Poems - KS2 English - BBC Bitesize](#)

Weekly non-negotiables and reminders

Remember to:

- Read your reading book at least five times a week for 15-20 minutes a day and ensure an adult signs your reading record/homework diary weekly
- Complete **weekly online Century learning**
- TTRS
- Practise your weekly spellings in your home learning books
- Trips for the half term: **Foundling Museum**

Century Maths Bug Club	Weekly - given on Fridays
Spellings (test every Monday)	Weekly - given on Fridays
Reading	Daily- checked every Monday
TTRS	Daily

'Learners today, leaders tomorrow'



Key Information - Times Tables



The multiplication tables check (MTC) is statutory for all year 4 pupils registered at state-funded maintained schools, special schools or academies, including free schools, in England.

The purpose of the MTC is to determine whether pupils can recall their times tables fluently, which is essential for future success in mathematics. It will help schools to identify pupils who have not yet mastered their times tables, so that additional support can be provided.

'Learners today, leaders tomorrow'

1x table	2x table	3x table	4x table	5x table	6x table
0 × 1 = 0 1 × 1 = 1 2 × 1 = 2 3 × 1 = 3 4 × 1 = 4 5 × 1 = 5 6 × 1 = 6 7 × 1 = 7 8 × 1 = 8 9 × 1 = 9 10 × 1 = 10 11 × 1 = 11 12 × 1 = 12	0 × 2 = 0 1 × 2 = 2 2 × 2 = 4 3 × 2 = 6 4 × 2 = 8 5 × 2 = 10 6 × 2 = 12 7 × 2 = 14 8 × 2 = 16 9 × 2 = 18 10 × 2 = 20 11 × 2 = 22 12 × 2 = 24	0 × 3 = 0 1 × 3 = 3 2 × 3 = 6 3 × 3 = 9 4 × 3 = 12 5 × 3 = 15 6 × 3 = 18 7 × 3 = 21 8 × 3 = 24 9 × 3 = 27 10 × 3 = 30 11 × 3 = 33 12 × 3 = 36	0 × 4 = 0 1 × 4 = 4 2 × 4 = 8 3 × 4 = 12 4 × 4 = 16 5 × 4 = 20 6 × 4 = 24 7 × 4 = 28 8 × 4 = 32 9 × 4 = 36 10 × 4 = 40 11 × 4 = 44 12 × 4 = 48	0 × 5 = 0 1 × 5 = 5 2 × 5 = 10 3 × 5 = 15 4 × 5 = 20 5 × 5 = 25 6 × 5 = 30 7 × 5 = 35 8 × 5 = 40 9 × 5 = 45 10 × 5 = 50 11 × 5 = 55 12 × 5 = 60	0 × 6 = 0 1 × 6 = 6 2 × 6 = 12 3 × 6 = 18 4 × 6 = 24 5 × 6 = 30 6 × 6 = 36 7 × 6 = 42 8 × 6 = 48 9 × 6 = 54 10 × 6 = 60 11 × 6 = 66 12 × 6 = 72
7x table	8x table	9x table	10x table	11x table	12x table
0 × 7 = 0 1 × 7 = 7 2 × 7 = 14 3 × 7 = 21 4 × 7 = 28 5 × 7 = 35 6 × 7 = 42 7 × 7 = 49 8 × 7 = 56 9 × 7 = 63 10 × 7 = 70 11 × 7 = 77 12 × 7 = 84	0 × 8 = 0 1 × 8 = 8 2 × 8 = 16 3 × 8 = 24 4 × 8 = 32 5 × 8 = 40 6 × 8 = 48 7 × 8 = 56 8 × 8 = 64 9 × 8 = 72 10 × 8 = 80 11 × 8 = 88 12 × 8 = 96	0 × 9 = 0 1 × 9 = 9 2 × 9 = 18 3 × 9 = 27 4 × 9 = 36 5 × 9 = 45 6 × 9 = 54 7 × 9 = 63 8 × 9 = 72 9 × 9 = 81 10 × 9 = 90 11 × 9 = 99 12 × 9 = 108	0 × 10 = 0 1 × 10 = 10 2 × 10 = 20 3 × 10 = 30 4 × 10 = 40 5 × 10 = 50 6 × 10 = 60 7 × 10 = 70 8 × 10 = 80 9 × 10 = 90 10 × 10 = 100 11 × 10 = 110 12 × 10 = 120	0 × 11 = 0 1 × 11 = 11 2 × 11 = 22 3 × 11 = 33 4 × 11 = 44 5 × 11 = 55 6 × 11 = 66 7 × 11 = 77 8 × 11 = 88 9 × 11 = 99 10 × 11 = 110 11 × 11 = 121 12 × 11 = 132	0 × 12 = 0 1 × 12 = 12 2 × 12 = 24 3 × 12 = 36 4 × 12 = 48 5 × 12 = 60 6 × 12 = 72 7 × 12 = 84 8 × 12 = 96 9 × 12 = 108 10 × 12 = 120 11 × 12 = 132 12 × 12 = 144

Key Information - Times Tables



1x table	2x table	3x table	4x table	5x table	6x table
$0 \times 1 = 0$ $1 \times 1 = 1$ $2 \times 1 = 2$ $3 \times 1 = 3$ $4 \times 1 = 4$ $5 \times 1 = 5$ $6 \times 1 = 6$ $7 \times 1 = 7$ $8 \times 1 = 8$ $9 \times 1 = 9$ $10 \times 1 = 10$ $11 \times 1 = 11$ $12 \times 1 = 12$	$0 \times 2 = 0$ $1 \times 2 = 2$ $2 \times 2 = 4$ $3 \times 2 = 6$ $4 \times 2 = 8$ $5 \times 2 = 10$ $6 \times 2 = 12$ $7 \times 2 = 14$ $8 \times 2 = 16$ $9 \times 2 = 18$ $10 \times 2 = 20$ $11 \times 2 = 22$ $12 \times 2 = 24$	$0 \times 3 = 0$ $1 \times 3 = 3$ $2 \times 3 = 6$ $3 \times 3 = 9$ $4 \times 3 = 12$ $5 \times 3 = 15$ $6 \times 3 = 18$ $7 \times 3 = 21$ $8 \times 3 = 24$ $9 \times 3 = 27$ $10 \times 3 = 30$ $11 \times 3 = 33$ $12 \times 3 = 36$	$0 \times 4 = 0$ $1 \times 4 = 4$ $2 \times 4 = 8$ $3 \times 4 = 12$ $4 \times 4 = 16$ $5 \times 4 = 20$ $6 \times 4 = 24$ $7 \times 4 = 28$ $8 \times 4 = 32$ $9 \times 4 = 36$ $10 \times 4 = 40$ $11 \times 4 = 44$ $12 \times 4 = 48$	$0 \times 5 = 0$ $1 \times 5 = 5$ $2 \times 5 = 10$ $3 \times 5 = 15$ $4 \times 5 = 20$ $5 \times 5 = 25$ $6 \times 5 = 30$ $7 \times 5 = 35$ $8 \times 5 = 40$ $9 \times 5 = 45$ $10 \times 5 = 50$ $11 \times 5 = 55$ $12 \times 5 = 60$	$0 \times 6 = 0$ $1 \times 6 = 6$ $2 \times 6 = 12$ $3 \times 6 = 18$ $4 \times 6 = 24$ $5 \times 6 = 30$ $6 \times 6 = 36$ $7 \times 6 = 42$ $8 \times 6 = 48$ $9 \times 6 = 54$ $10 \times 6 = 60$ $11 \times 6 = 66$ $12 \times 6 = 72$
7x table	8x table	9x table	10x table	11x table	12x table
$0 \times 7 = 0$ $1 \times 7 = 7$ $2 \times 7 = 14$ $3 \times 7 = 21$ $4 \times 7 = 28$ $5 \times 7 = 35$ $6 \times 7 = 42$ $7 \times 7 = 49$ $8 \times 7 = 56$ $9 \times 7 = 63$ $10 \times 7 = 70$ $11 \times 7 = 77$ $12 \times 7 = 84$	$0 \times 8 = 0$ $1 \times 8 = 8$ $2 \times 8 = 16$ $3 \times 8 = 24$ $4 \times 8 = 32$ $5 \times 8 = 40$ $6 \times 8 = 48$ $7 \times 8 = 56$ $8 \times 8 = 64$ $9 \times 8 = 72$ $10 \times 8 = 80$ $11 \times 8 = 88$ $12 \times 8 = 96$	$0 \times 9 = 0$ $1 \times 9 = 9$ $2 \times 9 = 18$ $3 \times 9 = 27$ $4 \times 9 = 36$ $5 \times 9 = 45$ $6 \times 9 = 54$ $7 \times 9 = 63$ $8 \times 9 = 72$ $9 \times 9 = 81$ $10 \times 9 = 90$ $11 \times 9 = 99$ $12 \times 9 = 108$	$0 \times 10 = 0$ $1 \times 10 = 10$ $2 \times 10 = 20$ $3 \times 10 = 30$ $4 \times 10 = 40$ $5 \times 10 = 50$ $6 \times 10 = 60$ $7 \times 10 = 70$ $8 \times 10 = 80$ $9 \times 10 = 90$ $10 \times 10 = 100$ $11 \times 10 = 110$ $12 \times 10 = 120$	$0 \times 11 = 0$ $1 \times 11 = 11$ $2 \times 11 = 22$ $3 \times 11 = 33$ $4 \times 11 = 44$ $5 \times 11 = 55$ $6 \times 11 = 66$ $7 \times 11 = 77$ $8 \times 11 = 88$ $9 \times 11 = 99$ $10 \times 11 = 110$ $11 \times 11 = 121$ $12 \times 11 = 132$	$0 \times 12 = 0$ $1 \times 12 = 12$ $2 \times 12 = 24$ $3 \times 12 = 36$ $4 \times 12 = 48$ $5 \times 12 = 60$ $6 \times 12 = 72$ $7 \times 12 = 84$ $8 \times 12 = 96$ $9 \times 12 = 108$ $10 \times 12 = 120$ $11 \times 12 = 132$ $12 \times 12 = 144$

Statutory Government
test: Summer term

Children should log
into TTRS daily and
regularly practice their
tables so they can
work towards rapid
recall.



Key Information

Items children need & DO NOT NEED

- No gadgets, smart watches;
- Phones are only allowed in Years 5 & 6 and MUST be switched off before entering school and handed in;
- No Pokémon or football / collectable cards at all.



No party bags / food

If a child has birthday we will of course mark it and perhaps read their favourite book/ sing happy birthday but we never give out food or party bags. Please also refrain from doing this in the playground.



'Learners today, leaders tomorrow'

Key Information- Y4 Curriculum



At Whitchurch, we plan a bespoke and interesting curriculum which centres around your child.

Everything is tied to a central theme; in Year 4, this is **Courage**.

You can find the curriculum overviews on our website ([here](#))

Year 4

Welcome to Year 4. We very much see your child's time in Year 4 as a partnership with parents and carers. Please refer to the information on this page to support us with your child's learning both at school and home.

If you have any queries please contact **Miss Hogberg** (Year 4 Leader).

'Learners today, leaders tomorrow'



Key Information- Y4 Curriculum



- Please take the time to read through the **Year 4 Curriculum newsletter** which was sent out to parents and carers via School Spider. The curriculum newsletter is sent out **at the end of every half term**.
- Within the newsletter it highlights the **cross curricular links** made within this topic, **what key areas we will be covering** and **suggestions to support learning at home**. It also provides key dates and information of any **upcoming events for Year 4..**
- Please also take the time to visit the school website where you can find our Year 4 Curriculum Overview.



Year 4 Curriculum Overview

	Autumn 1 Courage	Autumn 2 Resilience	Spring 1 Journeys	Spring 2 Adventure and discovery	Summer 1 Empathy and kindness	Summer 2 Curiosity
Enrichment	The Foundling Museum	St Paul's Cathedral including Dome climb (21 and 24.11.25) or Royal Albert Hall	African art workshop with Gakonga Visitor: Judaism	London Wetland Centre workshop	London Zoo Stanmore Marsh/ Canons Park Parade and Park visit Buddhist Temple Visit	Sports Day Sleepover In School (TBC) Cinema trip
English	Theme: Courage Genres/Writing focus: Poetry- Use figurative language to compose a narrative poem Character description Text: Beowulf the Brave retold by Oakley Graham	Theme: Resilience Genres/Writing focus: Twisted narrative alternative Persuasive letter Text: The Lost Happy Endings by Carol Ann Duffy	Theme: Journeys Genres/Writing focus: Narrative – Problem and Solution D Diary entry Text: <i>The Journey</i> by Francesca Sanna	Theme: Adventure and Discovery Genres/Writing focus: Mythical retell Information guide Text: <i>Arthur and the Golden Rope</i> by Joe Todd-Stanton	Theme: Empathy and Kindness Genres/Writing focus: Narrative Non-Chronological Report Text: <i>Leaf</i> by Sandra Dieckmann	Theme: Curiosity Genres/Writing focus: Setting description Newspaper report Text: <i>The Whale</i> by Ethan and Vita Murrow

'Learners today, leaders tomorrow'



Key Information- Handwriting



Teachers modelling handwriting:

Cursive handwriting to be implemented by all adults when writing in pupils' books, on the whiteboard, on classroom displays and within the SMART Notebook and printed resources.

Pen licence:

To be awarded to any pupil (irrespective of Year group) who is proficient in writing in cursive/joined up, using most of the rules set out by the Nelson Handwriting Scheme.

Regression in handwriting:

This can lead to the pen license being taken away, however, intervention would be put in place to support children in improving writing, before such action is taken.

'Learners today, leaders tomorrow'

Key Information- Handwriting



The Journey to Continuous Cursive: Handwriting Pangrams

A pangram is a sentence that contains every letter of the alphabet at least once.

Read each pangram carefully, trace it three times and then write it independently in your neatest, joined style three times.

The quick brown fox jumps over the lazy dog.

The quick brown fox jumps over the lazy dog.

The quick brown fox jumps over the lazy dog.

The quick brown fox jumps over the lazy dog.



Aa Bb Cc Dd

Ee Ff Gg Hh Ii

Jj Kk Ll Mm

Nn Oo Pp Qq

Rr Ss Tt Uu Vv

Ww Xx Yy Zz

Key Information- Assemblies



Children will have 3 assemblies a week.

- Monday- Themed Assembly
- Wednesday- Singing Assembly
- Friday- Celebration Assembly

Please do discuss the themes of our assemblies with your child and also practice their songs at home. Including the introduction of Sustainability and Opal as we move towards becoming these school.

Celebration Assembly is an opportunity to celebrate your children and all their achievements inside and outside of school, so should you have something your child wishes to share please contact their YTL with their achievements.

Class Assemblies - take place on Thursday mornings at 9:05am

4HH 9th October 2025

4XL 27th November 2025

4AK 19th March 2026

4RS 7th May 2026

'Learners today, leaders tomorrow'



Parent Volunteers



We feel that the involvement of parents in children's education is vital and we encourage active participation in many ways. In whatever way parents offer their time, we are always extremely grateful.

There are many different ways in which parents can help in school – These include:

- Helping with literacy (typically listening to children read)
- Helping with numeracy
- Sharing your professional skills (for example, if you're a doctor, you might go in to talk to a class whose topic is healthy living)
- Helping with classroom activities such as cookery
- Helping on school trips

'Learners today, leaders tomorrow'



School Trips



We aim to have a range of enrichment opportunities for your child this year.

	Autumn 1st	Autumn 2nd	Spring 1st	Spring 2nd	Summer 1st	Summer 2nd
Whole School	Black History Month, International Day/Evening, Road Safety Assemblies, Lunchtime themes: Harvest Festival, American Dinder day	Anti-Bullying day, Winter Fair Lunchtime themes: Diwali and Christmas dinner	Safer Internet day Lunchtime themes: Chinese New Year and Pancake day	World Book day Lunchtime themes: WBD, Eid	Lunchtime themes: Caribbean food day	Sports day Lunchtime themes: Spanish Fiesta, Big Picnic
Year 4	Foundling Museum Trip- October 25	St Pauls Cathedral workshop and Dome climb- 21.11.25 and 24.11.25	African Art workshop Judaism Visitor	London Wetland centre Trip Egyptian VR workshop	London Zoo Trip Stanmore Marsh visit Place of worship: Buddhist Temple Visit	Cinema trip School Sleepover (TBC)

- Trips will cost parents no more than £40 this year and if not enough contributions come through, certain trips won't be able to go ahead.

'Learners today, leaders tomorrow'

WRAPAROUND CARE



WRAPAROUND CARE can be booked via hello@junioradventuresgroup.co.uk and via the link on our school website - [Whitchurch Primary School and Nursery: Wraparound Care](#)

Enrichment clubs

External clubs like Karate, Chess, Robothink, Stage Coach are booked separately and paid for directly to the provider

'Learners today, leaders tomorrow'



Contacting Teachers/the school

Your first point of contact is your child's class teacher. We are always happy to talk to you about your child. Parents can **email or phone the school office**. Please allow 48 hours for a response. Contact the **teacher by email through the school office** or the easiest way is to **see the teacher at the end of the school day**. If teachers don't have time or more time is needed they will happily arrange an alternative time for you to come and talk. If you need to speak to the team leader, please contact Miss Hogberg at the following address: hhogberg@whitchurchps.co.uk Depending on your enquiry, she might ask your child's class teacher to respond to you.

Communication

- Remember to read the **weekly newsletter**
- **Important dates and updates** are posted on the school website – [please check regularly](#)
- Download the **School Spider app** to receive important messages and updates- the school office can help you with this

Important: Please tell us any change of details of people collecting your child

CONTACT

Whitchurch Primary School and Nursery
Wemborough Road, Stanmore, Middlesex, HA7 2EQ

School Office | 020 8951 5380

office@whitchurchps.co.uk



Whatsapp Groups



Don't forget our wonderful class reps! If you haven't already, please join your class WhatsApp group for updates and messages.

Please keep conversations respectful and professional.

Teachers and team leaders can only speak to you about anything that concerns your child; therefore please approach the class teacher directly and without delay.

Any Questions?

Thank you for attending, and for working in co-operation with us.

We are one team and on the same side- for the benefit of your child.

Any questions?

