

Whitchurch Primary School and Nursery

Year 5 Meet the Teacher

September 2025



Our Vision



The Whitchurch family rests at the very heart of everything we do, celebrating our uniqueness and building on our community's strength. We support our children to become confident, resilient and socially responsible global citizens who set and achieve the highest standards for themselves. We work in partnership with the whole community, respecting and responding to its voice and valuing its diversity. Our school provides a broad and rich curriculum that engages each and every child to know more, remember more and aspire for more.

'Learners today, leaders tomorrow'



Our Mission: During every school day...

- Children thrive with our broad and rich curriculum that inspires and motivates a love of lifelong learning and achievements.
- We plan stimulating learning experiences, inside and outside of school, where children practise, develop and apply new skills, knowledge and understanding.
- Children build values that will help support their confidence and their resilience in life beyond the school gate.
- Our whole community is happy, safe, secure and supported in learning together.
- The school community celebrates the importance of its cultural diversity, learning from one another in order to grow and develop together.



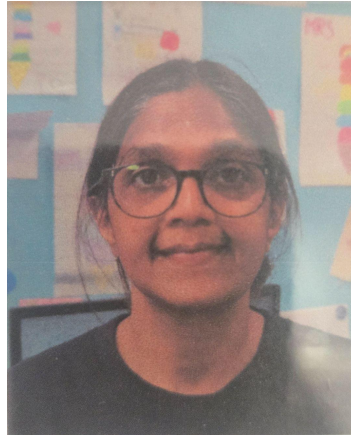
'Learners today, leaders tomorrow'



Year 5 Team



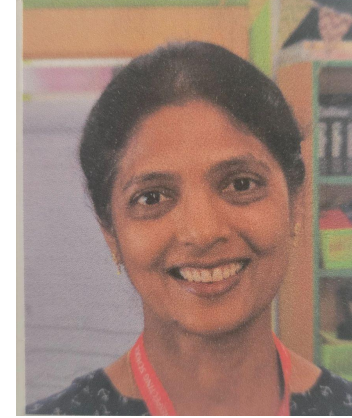
Miss Lakhani
Head of Year



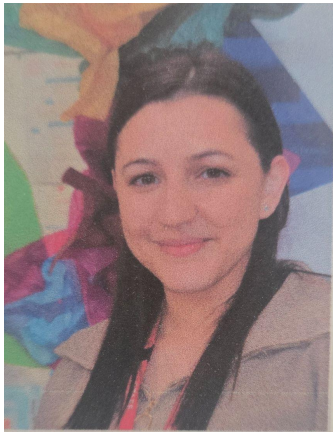
Mrs Price



Miss Chauhan



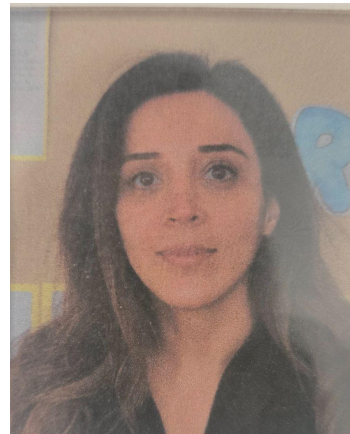
Mrs Shah



Mrs Pavli



Mrs Bokhari



Mrs Nawroly



Mrs Tulsiany



Whitchurch Core Values

Respect

We show respect for those around us, the diversity of our community and for our environment

Responsibility

We take responsibility for our learning, our behaviour and the choices we make

Honesty

We are honest with ourselves and others

Aspiration

We continually strive to be the best we can be

Generosity

We are generous in our words and actions

Resilience

We are resilient to the challenges we face daily

'Learners today, leaders tomorrow'



Pick up and Drop off times



Morning drop off:

Children should be dropped at either main gate or Marsh Lane which are opened at around **8.35am**. We have a 'soft start' which means children can arrive from **8.35am until 8:55am** when the gates are locked. After that time children are registered as late and should report to the main school office.

Afternoon collection:

Learning time finishes at **3.25pm** and parents/carers need to wait patiently at the patio door. Sometimes it might be a few minutes later. If you want to speak to the teacher please wait until we have dismissed all other children (the handing over of children is our priority at the end of the day).

'Learners today, leaders tomorrow'



Attendance and Punctuality

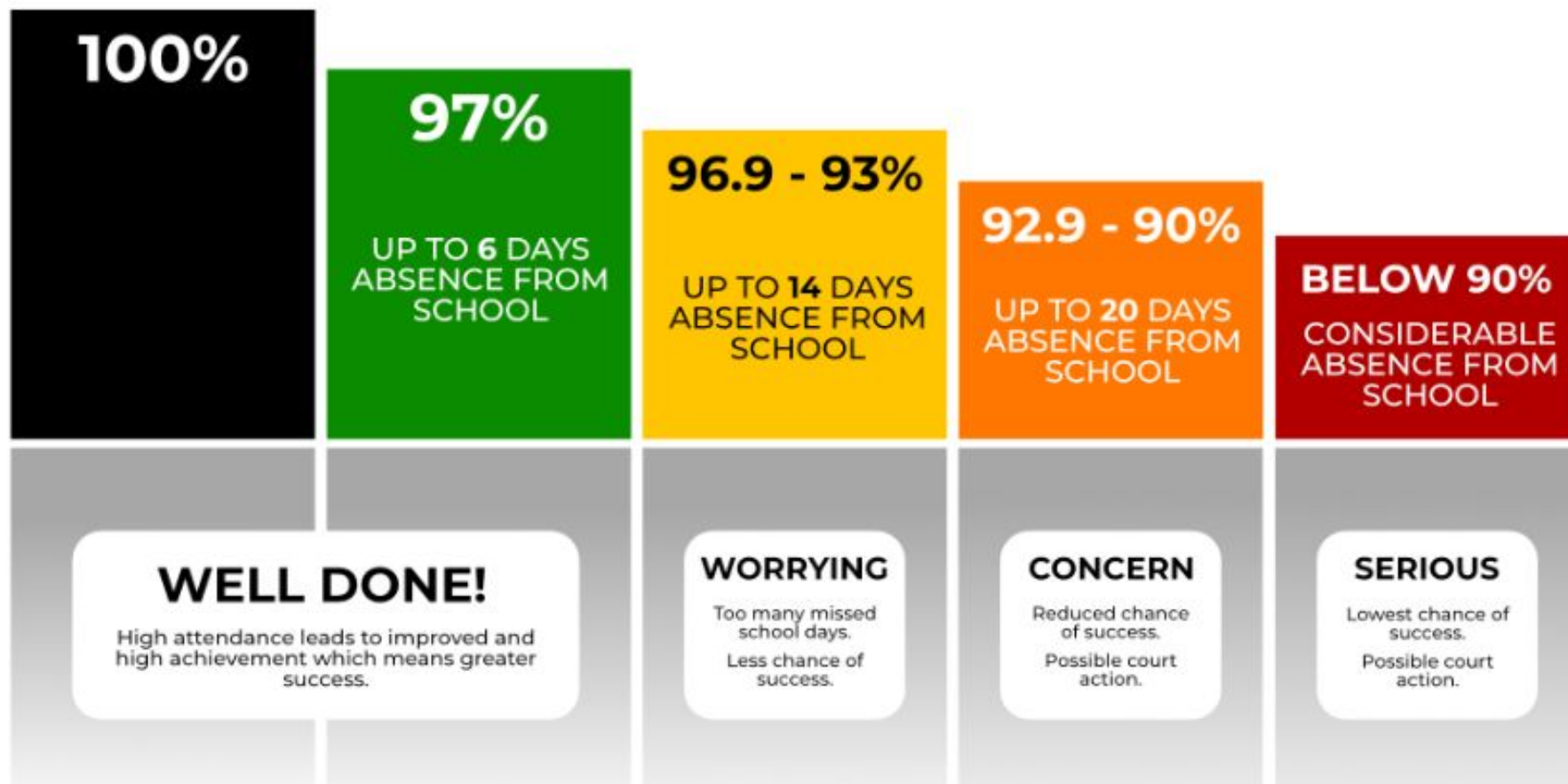


- Daily attendance at school is of the **utmost importance**.
- Please ensure that your child is always on time:
 - The school gates open at around 8:35am
 - Children are expected to be punctual in the morning so that they do not miss the morning routine / challenges
- **Please do not book holidays during term times** – these **will not be approved** and your child will have these days recorded as unauthorised
- As much as possible, please ensure you book appointments outside of school day

'Learners today, leaders tomorrow'



Attendance and Punctuality



'Learners today, leaders tomorrow'



Booking School Meals



We strongly recommend a hot school meal in the middle of the day. Children are supported in the hall and we ensure they are encouraged to eat and try new things

Kindly book for the full half term through ParentPay. We have bands which are given to the children in the morning. The colour is dependent on your child's choice of food:

Red: meat and fish option

Green: vegetarian options

Yellow: vegan or alternative option



Packed lunches are discouraged for a number of reasons;

- Difficult to ensure a healthy balance of all the essential food groups;
- We have a number of children with extremely serious allergies and have to be strict about the food coming into school;
- It's more difficult for us to monitor what children are eating;
- We may replace any packed lunch that is not compliant with our lunch policies (we will of course advise parents of our concerns).

'Learners today, leaders tomorrow'



Healthy Eating

If your child has packed lunches, please refer to this nutritional guidance

Packed Lunch Guidance

Everyday:

- 1 portion of fruit
- 1 portion of vegetables
- 1 portion of protein (to help you grow and stay healthy)
This includes: meat, fish, chickpeas, lentils, kidney beans, falafel, hummus.
- 1 portion of starchy food (for energy!)
This includes: potatoes, pasta, bread, rice, couscous, noodles, cereals.
- 1 portion of dairy (to build up strength)
This includes: milk, cheese, yoghurt, fromage frais, custard.

Once a week:

- Source of Omega (to help your overall health)
This includes: oily fish, flaxseeds, chia seeds, soy beans, kidney beans.

Drink:

- Only water, milk or yoghurt drinks

You can have healthy treats in your lunch
– but eat these after everything else!

Fridays Only:

- Chocolate bars
- Crisps
- Processed Food: sausage rolls, pies, corned meat/sausages

NO NUTS

NO FIZZY DRINKS

NO FAST FOODS
(burgers, chips, McDonalds, KFC etc)

Key Information: School Uniform

- We ask that your child always has on a clean uniform;
- Red sweatshirt or cardigan (with or without school logo);
- White polo shirt (with or without school logo);
- Dark grey trousers, skirt or pinafore dress / red and white dress for the summer;
- Smart black school shoes;
- Shirts should be tucked in **at all times**;
- If your child has shoe laces for either their school shoes or PE shoes, please ensure you are teaching them how to tie them if they do not know already;
- Now that we have rainier days, please ensure that your child has a rain mac or coat;
- Please ensure all uniform and PE items are **labelled so they can be easily identified**.

'Learners today, leaders tomorrow'



Key Information: Physical Education

PE Days

Year 5:

All classes outdoor P.E: **Every Wednesday**

All classes indoor P.E.: **Every Friday**

PE kits

Children come to school in their P.E. kit:

- Coloured t-shirt (with or without school logo) - depending on team colour
- Black shorts
- Grey sweatshirt – outdoors
- Grey tracksuit bottoms – outdoors
- We ask that a sweat band is provided to cover a Sikh wristband.
- No other jewellery is allowed. (Earrings must be removed / covered in masking tape.)
- Long hair should be tied up.
- Please cover verrucas with a plaster or provide a verruca guard (socks are not allowed during indoor PE due to slipping)

'Learners today, leaders tomorrow'



Key Information - Stationery

Stationery: Please ensure that your child has everything they need for the day.

We have a pop-up stationery shop run by the Year 6 children, every Tuesday at lunch time. The list and prices are as follows:

- Pencil case
- 2 pencils
- Writing pen in **blue**
- Pencil sharpener
- 30cm clear ruler
- Glue stick
- Children's safety scissors
- Green pen (biro)
- **Highlighters- a few different colours (ideally not green or pink)**
- Colouring pencils
- Dry wipe board pen

'Learners today, leaders tomorrow'



Y6 run the Stationery shop weekly on Wednesdays at lunchtime.



Key Information - Reading

Reading – Children in Year 5 are continuing to work on their reading stamina, pace and understanding. Children need to read **with an adult** for a minimum of 20 minutes a day (BUG CLUB) or their reading book (matched level and free choice - as per the home learning policy).

This is so that they **can ask and answer questions**, work on their **decoding** and **vocabulary skills** and **to ensure they are not skipping through words, phrases, sentences and paragraphs that they do not understand**. This cannot be achieved when reading to one's self (this is 'reading for pleasure' and encourages a life-long love of reading.)

When you have read with your child, they need to log the name of the book, pages read and a **reflection** of what they have read in the diary and it will need an adult signature. Diaries are checked by the teacher every **Monday**.

Children should bring their dairies to school **every day** so they can start to log important messages and information.

'Learners today, leaders tomorrow'

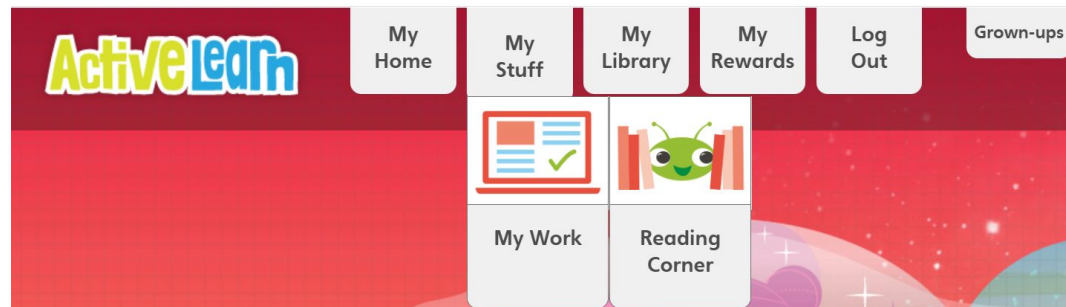


Key Information - Reading



Bug Club is an online reading platform used to support children's reading at home. Pupils are expected to log in regularly to read books assigned to their account and complete the short comprehension questions. Teachers can monitor progress and engagement through the platform.

In KS2, pupils can login and click on '*My Work*' to read books allocated to them by their class teacher. They can also click on '*Reading Corner*' to explore a range of online books to enjoy either independently or with an adult.



Key Information - Reading



Why Can't I Skip My 20 Minutes of Reading Tonight?

Student "A"
reads **20 minutes**
each day

3600 minutes in
a school year

1,800,000 words



Student "B"
reads **5 minutes**
each day

900 minutes in
a school year

282,000 words



Student "C"
reads **1 minute**
each day

180 minutes in
a school year

8,000 words



Whitchurch's Recommended Reading List

Year 5

- Launching in Autumn 2 (if enough books are secured)
- High-quality texts for children to read and enjoy at home to develop a love of reading
- A range of 'challenges' for children to complete after reading (for example, design a new front cover, write a review)
- Pupils then work towards Bronze, Silver, Gold and Platinum certificates depending on how many books and challenges they have read and completed



- Please scan the QR code to purchase books and support our reading initiative.
- Books can also be bought elsewhere, or donated if you already have them at home in good condition.
- The wish list is also linked in the **Whitchurch Weekly Newsletter**.

Key Information - Diaries

Please encourage your child to be responsible and independent. They need to have their diaries on a Monday morning completed with a reflection about the part of the book they've read.



This needs all the evidence of reading and to be signed **by an adult**.

Week Beginning: 2nd September 2024

Week: 1

Subject	Details – Monday 2nd	✓

Subject	Details – Tuesday 3rd	✓

Subject	Details – Wednesday 4th	✓

The most effective way to do it, is to do it.
Amelia Earhart

10

September

M	T	W	T	F	S	S	M	T	W	T	F	S	S	M	T	W	T	F	S	S							
2	3	4	5	6	7	8	9	10	11	12	13	14	15	16	17	18	19	20	21	22	23	24	25	26	27	28	29

Subject	Details – Thursday 5th	✓

Subject	Details – Friday 6th	✓

Teacher's/Tutor's signature

Parent's/Carer's signature

Weekend	Notes

11







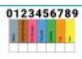





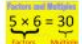

Key Information - Home Learning



Year 5 Home Learning Autumn 1

This half term, children are invited to complete a range of home learning tasks linked to the curriculum and the learning taking place in class. While you are welcome to complete as many tasks as you like, we ask that you complete at least three tasks across different subjects, for example, one English, one Maths, and one from another area of the curriculum.

Home learning is due in the week beginning (Monday 13th October) when children will have the opportunity to share their work with peers and teachers across the year group and receive feedback. Tasks can be completed in home learning exercise books or in any format you prefer.

English	Maths	Other Curriculum Subjects
 Choose a character from your class text and write a description of the character.	 Find out about the Pascale triangle. Create a poster to demonstrate and explain the Pascale triangle.	 Democracy is one of our British Values. Explain what this means and how is democracy practised in the United Kingdom. You may create Powerpoint slides or a poster.
 Choose a setting from your text and draw what you think it looks like based on its description.	 Research the population of three different countries. Round each population to the nearest million. Extension: Create a bar chart to compare the populations.	 Draw the world map and indicate all the lines of significance on it. Extension: Choose one country the Equator passes through. Write 3 facts about that country.
 Write a one-page report to share your findings on the refugee crisis around the world. Choose a country (e.g., Syria, Afghanistan, Sudan, Ukraine) and research why people have had to flee from there.	 Find out how much food an average person eats in a week. Estimate how much a family of 4 would eat in a year. Show how you made your calculations. Extension: Use column addition or subtraction to check your estimates.	 Find out what different types of materials that are used to build a computer. Explain why these materials are used.
 Write a short story about a plight of a refugee family. You may need to research on some real life stories.	 Design a fun poster that explains either: Multiples vs. Factors, OR Prime, Square, and Cube Numbers Use colour, diagrams, examples and even emojis!	 Sketch your favourite building (e.g. the Shard) or landmark (Big Ben, the London Eye). Alternatively, you may choose to sketch our school building or your house. Try to add as much details like windows using lines and shading.

Useful websites and resources

- Buckingham Palace:
<https://www.rct.uk/visit/buckingham-palace>
- BBC Bitesize: Videos, quizzes and lessons across the curriculum:
<https://www.bbc.co.uk/bitesize>
- Times Table practice:
<https://play.trockstars.com/>
- IXL: Maths games and activities:
<https://uk.ixl.com/maths/year-5>

Weekly non-negotiables and reminders

Remember to:

- Read your reading book at least five times a week and ensure an adult signs your reading record/homework diary weekly
- Complete **weekly online Maths learning** (Century)
- Practise your **weekly spellings** in your home learning books
- P.E days:
 - Outdoor P.E: Every Wednesday
 - Indoor P.E: Every Friday
- Trip to Buckingham Palace: Monday 29th September 2025

Century Maths
Bug Club

Weekly - given on Fridays

Spellings (**test every Thursday**)

Weekly - given on Fridays

Reading

Daily- checked every Monday

TTRS

Daily

'Learners today, leaders tomorrow'



Key Information

Items children need & DO NOT NEED

- No gadgets, smart watches;
- Phones are only allowed in Years 5 & 6 and MUST be switched off before entering school and handed in;
- No Pokémon or football / collectable cards at all.

No party bags / food

When it's your child's birthday, we will of course mark it and perhaps read their favourite book/ sing happy birthday but we never give out food or party bags. Please also refrain from doing this in the playground.

'Learners today, leaders tomorrow'



Key Information- Year 5 Curriculum



At Whitchurch, we plan a bespoke and interesting curriculum which centres around your child. Everything is tied to a central theme; in Year 5, this is **Mental and Physical Wellbeing**.

You can find the curriculum overviews on our website ([here](https://www.whitchurchprimary.harrow.sch.uk/page/year-5/118523))

'Learners today, leaders tomorrow'



Key Information- Year 5 Curriculum



- Please take the time to read through the **Year 5 Curriculum newsletter** which was sent out to parents and carers via School Spider. The curriculum newsletter is sent out **at the end of every half term.**
- Within the newsletter it highlights the **cross curricular links** made within this topic, **what key areas we will be covering** and **suggestions to support learning at home.** It also provides key dates and information of any **upcoming events for Year 5..**
- Please also take the time to visit the school website where you can find our Year 5 Curriculum Overview.



This half term
our topic is:
**Name: Mental
and Physical
Well-being**

Year 5 Curriculum Plan - Autumn 1

	Week 1 W/B 1 st September 2025	Week 2 W/B 8 th September 2025	Week 3 W/B 15 th September 2025	Week 4 W/B 22 nd September 2025	Week 5 W/B 29 th September 2025	Week 6 W/B 6 th October 2025	Week 7 W/B 13 th October 2025	Week 8 W/B 20 th October 2025
Events / Info	Staff inset: 2 nd September 2025	Meet the teacher: Friday 12 th September @ 9:00am			Trip to Buckingham Palace: Monday 29 th September	National poetry day: 2 nd October Staff inset: 3 rd October	Parents Evenings: 14 th & 16 th October	
English The Boy at the Back of the Classroom	WALT: Write imaginatively in role to explore thoughts and feelings. (Hook lesson) WALT: Make predictions based on text features. <u>Short burst writing:</u> Prediction task WALT: Recount a story event from a character's perspective. <u>Short burst writing:</u> Recount	WALT: Explore characters' thoughts, motives and feelings through hot seating based on story events. Hot seating WALT: Write an internal monologue in role based on the story. <u>Short burst writing:</u> Internal monologue	WALT: Make inferences about characters' thoughts and feelings using evidence from the text. <u>Short burst writing:</u> Reflective writing WALT: Infer character traits using evidence from the text. Role on the wall WALT: Plan an informal letter using emotive	WALT: Plan and write a cold task adventure story. <u>Cold task:</u> Write an adventure story WALT: Identify structure and features of a formal letter. Formal letter model analysis WALT: Plan a formal letter to King Charles III about Ahmet's story.	WALT: Identify features of adventure stories. <u>Short burst writing:</u> List features / key language WALT: Describe a setting using sensory language. <u>Short burst writing:</u> Buckingham Palace / London street scene WALT: Explore the role of the	WALT: Develop a narrative opening including setting and character introduction. <u>Short burst writing:</u> Paragraph practice WALT: Plan a continuation of the story from Chapter 16. Storyboard plan WALT: Write a narrative story based on Ahmet's arrival at	WALT: Build suspense and tension in narrative. <u>Short burst writing:</u> Sentence structure and pacing focus WALT: Use paragraphs to organise narrative events. Narrative second draft WALT: Edit and improve writing. (whole class feedback)	WALT: Reflect on the theme of bullying and how characters respond. <u>Short burst writing:</u> Reflection journal entry WALT: Compare how different characters respond to conflict. Discussion and evidence table WALT: Write a poem or message

'Learners today, leaders tomorrow'



Key Information- Handwriting



Teachers modelling handwriting:

Cursive handwriting to be implemented by all adults when writing in pupils' books, on the whiteboard, on classroom displays and within the SMART Notebook and printed resources.

Pen licence:

To be awarded to any pupil (irrespective of Year group) who is proficient in writing in cursive/joined up, using most of the rules set out by the Nelson Handwriting Scheme.

Regression in handwriting:

This can lead to the pen license being taken away, however, intervention would be put in place to support children in improving writing, before such action is taken.

'Learners today, leaders tomorrow'

Key Information- Handwriting



The Journey to Continuous Cursive: Handwriting Pangrams

A pangram is a sentence that contains every letter of the alphabet at least once.

Read each pangram carefully, trace it three times and then write it independently in your neatest, joined style three times.

The quick brown fox jumps over the lazy dog.

The quick brown fox jumps over the lazy dog.

The quick brown fox jumps over the lazy dog.

The quick brown fox jumps over the lazy dog.



Aa Bb Cc Dd

Ee Ff Gg Hh Ii

Jj Kk Ll Mm

Nn Oo Pp Qq

Rr Ss Tt Uu Vv

Ww Xx Yy Zz

Key Information- Assemblies



Children will have 3 assemblies a week.

- Monday- Themed Assembly
- Wednesday- Singing Assembly
- Friday- Celebration Assembly

Please do discuss the themes of our assemblies with your child and also practice their songs at home. Including the introduction of Sustainability and Opal as we move towards becoming these school.

Celebration Assembly is an opportunity to celebrate your children and all their achievements inside and outside of school, so should you have something your child wishes to share please contact their YTL with their achievements.

Class Assemblies - take place on Thursday mornings at 9:05am

5NL 23rd October 2025

5RP 11th December 2025

5RC 27th January 2026

5PS 21st April 2026

'Learners today, leaders tomorrow'



Parent Volunteers

- We feel that the involvement of parents in children's education is vital and we encourage active participation in many ways. In whatever way parents offer their time, we are always extremely grateful.
- There are many different ways in which parents can help in school – These include:
 - Helping with literacy (typically listening to children read)
 - Helping with numeracy
 - Sharing your professional skills (for example, if you're a doctor, you might go in to talk to a class whose topic is healthy living)
 - Helping with classroom activities such as cookery
 - Helping on school trips



'Learners today, leaders tomorrow'

WRAPAROUND CARE



WRAPAROUND CARE can be booked via hello@junioradventuresgroup.co.uk and via the link on our school website - [Whitchurch Primary School and Nursery: Wraparound Care](#)

Enrichment clubs

External clubs like Karate, Chess, Robothink, Stage Coach are booked separately and paid for directly to the provider

'Learners today, leaders tomorrow'



Contacting Teachers/the school

Your first point of contact is your child's class teacher. We are always happy to talk to you about your child. Parents can **email or phone the school office**. Please allow 48 hours for a response. Contact the **teacher by email through the school office** or the easiest way is to **see the teacher at the end of the school day**. If teachers don't have time or more time is needed they will happily arrange an alternative time for you to come and talk.

If you need to speak to the team leader, please contact Miss Lakhani at the following address: nlakhani@whitchurchps.co.uk
Depending on your enquiry, she might ask your child's class teacher to respond to you.

Communication

- Remember to read the **weekly newsletter**
- **Important dates and updates** are posted on the school website – [please check regularly](#)
- Download the **School Spider app** to receive important messages and updates- the school office can help you with this

Important: Please tell us any change of details of people collecting your child

CONTACT

Whitchurch Primary School and Nursery
Wemborough Road, Stanmore, Middlesex, HA7 2EQ

School Office | 020 8951 5380

office@whitchurchps.co.uk



Whatsapp Groups



Don't forget our wonderful class reps! If you haven't already, please join your class WhatsApp group for updates and messages.

Please keep conversations respectful and professional.

Teachers and team leaders can only speak to you about anything that concerns your child; therefore please approach the class teacher directly and without delay.

Any Questions?

Thank you for attending, and for working in co-operation with us.

We are one team and on the same side- for the benefit of your child.

Any questions?

