

Whitchurch Primary School and Nursery

Year 2 Meet the Teacher

September 2025



Our Vision



The Whitchurch family rests at the very heart of everything we do, celebrating our uniqueness and building on our community's strength. We support our children to become confident, resilient and socially responsible global citizens who set and achieve the highest standards for themselves. We work in partnership with the whole community, respecting and responding to its voice and valuing its diversity. Our school provides a broad and rich curriculum that engages each and every child to know more, remember more and aspire for more.

'Learners today, leaders tomorrow'



Our Mission: During every school day...

- Children thrive with our broad and rich curriculum that inspires and motivates a love of lifelong learning and achievements.
- We plan stimulating learning experiences, inside and outside of school, where children practise, develop and apply new skills, knowledge and understanding.
- Children build values that will help support their confidence and their resilience in life beyond the school gate.
- Our whole community is happy, safe, secure and supported in learning together.
- The school community celebrates the importance of its cultural diversity, learning from one another in order to grow and develop together.



'Learners today, leaders tomorrow'



Year 2 Team



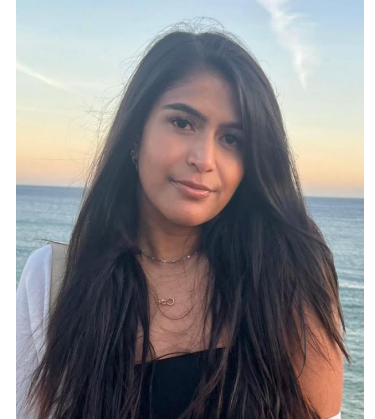
Ms Doshi & Nickson
Head of Year



Ms Nicholas



Mrs Jain



Miss Karia



Mrs Lacatusu



Mrs Sangani



Mrs Patel



Whitchurch Core Values

Respect

We show respect for those around us, the diversity of our community and for our environment

Responsibility

We take responsibility for our learning, our behaviour and the choices we make

Honesty

We are honest with ourselves and others

Aspiration

We continually strive to be the best we can be

Generosity

We are generous in our words and actions

Resilience

We are resilient to the challenges we face daily

'Learners today, leaders tomorrow'



Pick up and Drop off times



Morning drop off:

Children should be dropped at either the main gate or Marsh Lane which are opened at around **8.35am**. We have a 'soft start' which means children can arrive from **8.40am until 8:55am** when the gates are locked. After that time children are registered as late and should report to the main school office.

Afternoon collection:

Learning time finishes at **3.20pm** and parents/carers need to wait patiently at the patio door. Sometimes it might be a few minutes later. If you want to speak to the teacher please wait until we have dismissed all other children (the handing over of children is our priority at the end of the day).

'Learners today, leaders tomorrow'



Attendance and Punctuality

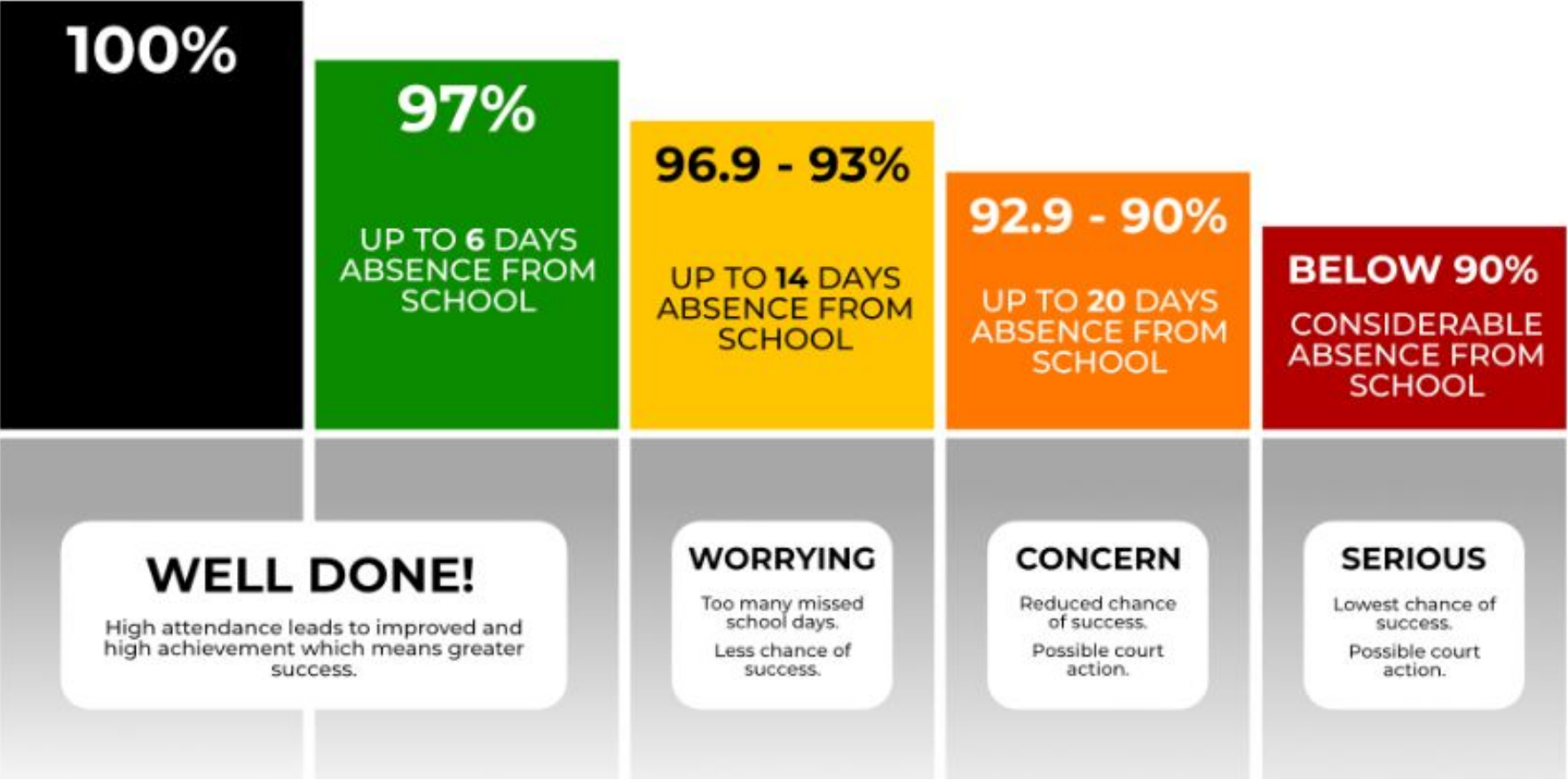


- Daily attendance at school is of the **utmost importance**.
- Please ensure that your child is always on time:
 - The school gates open at around 8:35am
 - Children are expected to be punctual in the morning so that they do not miss the morning routine / challenges
- **Please do not book holidays during term times** – these **will not be approved** and your child will have these days recorded as unauthorised
- As much as possible, please ensure you book appointments outside of school day

'Learners today, leaders tomorrow'



Attendance and Punctuality



'Learners today, leaders tomorrow'



Booking School Meals

We strongly recommend a hot school meal in the middle of the day. Children are supported in the hall and we ensure they are encouraged to eat and try new things

Kindly book for the full half term through ParentPay. We have bands which are given to the children in the morning. The colour is dependent on your child's choice of food:

Red: meat and fish option

Green: vegetarian options

Yellow: vegan or alternative option



Packed lunches are discouraged for a number of reasons;

- Difficult to ensure a healthy balance of all the essential food groups;
- We have a number of children with extremely serious allergies and have to be strict about the food coming into school;
- It's more difficult for us to monitor what children are eating;
- We may replace any packed lunch that is not compliant with our lunch policies (we will of course advise parents of our concerns).

'Learners today, leaders tomorrow'



Healthy Eating

If your child has packed lunches, please refer to this nutritional guidance

Whitchurch
Primary School and Nursery

Packed Lunch Guidance

Everyday:

- 1 portion of fruit
- 1 portion of vegetables
- 1 portion of protein (to help you grow and stay healthy)
This includes: meat, fish, chickpeas, lentils, kidney beans, falafel, hummus.
- 1 portion of starchy food (for energy!)
This includes: potatoes, pasta, bread, rice, couscous, noodles, cereals.
- 1 portion of dairy (to build up strength)
This includes: milk, cheese, yoghurt, fromage frais, custard.

Once a week:

- Source of Omega (to help your overall health)
This includes: oily fish, flaxseeds, chia seeds, soy beans, kidney beans.

Drink:

- Only water, milk or yoghurt drinks

You can have healthy treats in your lunch – but eat these after everything else!

Fridays Only:

- Chocolate bars
- Crisps
- Processed Food: sausage rolls, pies, corned meat/sausages



NO NUTS
NO FIZZY DRINKS
NO FAST FOODS
(burgers, chips, McDonalds, KFC etc)

Key Information: School Uniform

- We ask that your child always has on a clean uniform;
- Red sweatshirt or cardigan (with or without school logo);
- White polo shirt (with or without school logo);
- Dark grey trousers, skirt or pinafore dress / red and white dress for the summer;
- Smart **black** school shoes;
- Shirts should be tucked in **at all times**;
- Please teach your child to tie shoe laces if they have them on their school or PE shoes.
- Rain mac or coat on rainier days;
- **Book bags only**
- Please ensure all uniform and PE items are **labelled so they can be easily identified.**

'Learners today, leaders tomorrow'



Key Information: Physical Education



PE kits

Children come to school in their P.E. kit:

- Coloured t-shirt (with or without school logo) - depending on team colour
- Black shorts
- Grey sweatshirt – outdoors
- Grey tracksuit bottoms – outdoors
- We ask that a sweat band is provided to cover a Sikh wristband.
- No jewellery or religious symbols are allowed. (Earrings must be removed)
- Long hair must be tied up.
- Please cover verrucas with a plaster or provide a verruca guard (socks are not allowed during indoor PE due to slipping)

PE Days
Year 2:
Monday & Friday



'Learners today, leaders tomorrow'

Key Information - Reading



- **Year 2 focus:** developing fluency, expression and comprehension in line with the end of Key Stage 1 curriculum.
- **Daily reading:** children should read with an adult for at least 20 minutes.
- **Purpose:** to practise decoding, build vocabulary and discuss text meaning.
- **Independent reading:** encouraged separately as 'reading for pleasure' to foster a life-long love of books.
- **Reading diary:** record the book title, pages and a short reflection, signed by an adult.
- **Checks:** teachers review diaries weekly.
- **Reminder:** children must bring diaries to school every day for logging messages and information.

'Learners today, leaders tomorrow'



Key Information - Reading



Why Can't I Skip My 20 Minutes of Reading Tonight?

Student "A"
reads **20 minutes**
each day

3600 minutes in
a school year

1,800,000 words



Student "B"
reads **5 minutes**
each day

900 minutes in
a school year

282,000 words



Student "C"
reads **1 minute**
each day

180 minutes in
a school year

8,000 words

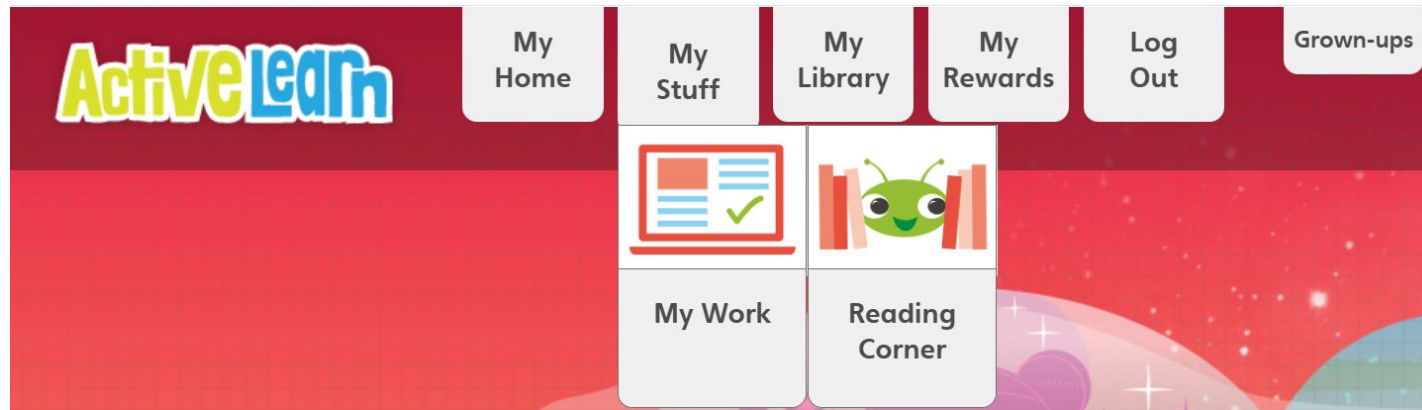


Key Information - Reading

Bug Club is an online reading platform used to support children's reading at home.



In KS1, pupils can login and click on '*Reading Corner*' to explore a range of online books to enjoy with an adult or independently.



'Learners today, leaders tomorrow'



Whitchurch's Recommended Reading List

Year 2

- Launching in Autumn 2 (if enough books are secured)
- High-quality texts for children to read and enjoy at home to develop a love of reading
- A range of 'challenges' for children to complete after reading (for example, design a new front cover, write a review)
- Pupils then work towards Bronze, Silver, Gold and Platinum certificates depending on how many books and challenges they have read and completed



- Please scan the QR code to purchase books and support our reading initiative.
- Books can also be bought elsewhere, or donated if you already have them at home in good condition.
- The wish list is also linked in the **Whitchurch Weekly Newsletter**.

Key Information - Reading Diaries

Please encourage your child to be responsible and independent.
They need to have their diaries every day!



Week Beginning: 2nd September 2024

Week:

Subject	Details – Monday 2nd	✓

Subject	Details – Tuesday 3rd	✓

Subject	Details – Wednesday 4th	✓

The most effective way to do it, is to do it.
Amelia Earhart

10

September

M	T	W	T	F	S	S	M	T	W	T	F	S	S	M	T	W	T	F	S	S							
2	3	4	5	6	7	8	9	10	11	12	13	14	15	16	17	18	19	20	21	22	23	24	25	26	27	28	29

Subject	Details – Thursday 5th	✓

Subject	Details – Friday 6th	✓

Teacher's/Tutor's signature

Parent's/Carer's signature

Weekend	Notes

11

This needs all the
evidence of reading and
to be signed **by an adult**.



Key Information - Home Learning



Year 2 Home Learning Autumn 1

This half term, children are invited to complete a range of home learning tasks linked to the curriculum and the learning taking place in class. While you are welcome to complete as many tasks as you like we ask that you complete at least three tasks across different subjects, for example, one English, one Maths, and one from another area of the curriculum.

Home learning is due in the week beginning (insert date), when children will have the opportunity share their work with peers and teachers across the year group and receive feedback. Tasks can be completed in home learning exercise books or in any format you prefer.

English	Maths	Other Curriculum Subjects
Grammar & Introduction Find 5 past tense verbs from your bedtime story. (Use any storybook at home to spot past tense verbs.)	Sock Skip Count Lay out socks and skip count by 2s, 5s, or 10s aloud.	Science - Materials Find items and label what they're made from. How to do it: Children for objects (e.g., spoon, jumper, glass, toy) and write a list/draw pictures, labelling what material they are made from...
 Character & Viewpoint Draw Vlad on paper & write 3 things he's thinking.	 Tens Ladder Draw a Ladder with 10 gaps. Write the Numbers starting 10, 20... Cover up one and work out the missing number	 Computing: Online Safety Create an online safety poster! Include how to protect your personal information!
 Diary Features Find a diary or story and list 3 features in it. (Could be a storybook, etc.)	 Toy Place Value Sort Group toys into tens and ones, then write the number.	 History Fire of London Research facts about the Great Fire of London
Diary Writing Draw 5 boxes & sketch Vlad's day in order. (Use paper to create a simple storyboard.)	 Spoon Fact Families Use spoons to show 3 numbers in an addition/ subtraction family	Science: Waterproof Test Test materials to see if they're waterproof. How to do it: Use small scraps of materials (e.g., paper, foil, fabric). Pour or drip water on each and record what happens. Which ones are waterproof?

Creative Curriculum Project

To be done in the summer term

Useful websites and resources

- Visit The Tower of London
- Visit Monument
- Topic/maths/English/phonics website links
- Handwriting resources
- <https://www.topmarks.co.uk/maths-games/5-7-years/counting>
- Practising counting in 2s, 5s and 10s during everyday routines
- <https://www.fireoflondon.org.uk/>
- Talk about ovens now vs. in 1666 and why fires were more dangerous back then.
- Use Google Maps to find modern-day Pudding Lane.
- <https://www.bbc.co.uk/bitesize/topics/zrsg/gk7>
- Build a bridge using spaghetti, straws, Lego, or lollipop sticks. Which materials make the strongest structure?

Weekly non-negotiables and reminders

Remember to:

- **Read your reading book** at least five times a week and ensure an adult signs your reading record/homework diary weekly
- Take part in the **Whitchurch Reading Challenge**. Try to read all 30 books by the end of the school year!
- Complete **weekly online Maths learning** (Century AI)
- **Practise and write sentences of your weekly spellings** in your home learning books
- PE days for this year are **Mondays** and **Fridays**
- Great Fire of London Workshop
- Priest Visit
- Fire Service Visit

Century Maths Bug Club	Weekly - given on Friday
Spellings (test every Thursday)	Weekly - given on Fridays hand in sentences by Wednesday the following week
Reading	Daily- checked every week
TTRS	Later in the year

Homework to be handed in no later than Wednesday!



'Learners today, leaders tomorrow'

Key Information - Times Tables



1x table	2x table	3x table	4x table	5x table	6x table
$0 \times 1 = 0$ $1 \times 1 = 1$ $2 \times 1 = 2$ $3 \times 1 = 3$ $4 \times 1 = 4$ $5 \times 1 = 5$ $6 \times 1 = 6$ $7 \times 1 = 7$ $8 \times 1 = 8$ $9 \times 1 = 9$ $10 \times 1 = 10$ $11 \times 1 = 11$ $12 \times 1 = 12$	$0 \times 2 = 0$ $1 \times 2 = 2$ $2 \times 2 = 4$ $3 \times 2 = 6$ $4 \times 2 = 8$ $5 \times 2 = 10$ $6 \times 2 = 12$ $7 \times 2 = 14$ $8 \times 2 = 16$ $9 \times 2 = 18$ $10 \times 2 = 20$ $11 \times 2 = 22$ $12 \times 2 = 24$	$0 \times 3 = 0$ $1 \times 3 = 3$ $2 \times 3 = 6$ $3 \times 3 = 9$ $4 \times 3 = 12$ $5 \times 3 = 15$ $6 \times 3 = 18$ $7 \times 3 = 21$ $8 \times 3 = 24$ $9 \times 3 = 27$ $10 \times 3 = 30$ $11 \times 3 = 33$ $12 \times 3 = 36$	$0 \times 4 = 0$ $1 \times 4 = 4$ $2 \times 4 = 8$ $3 \times 4 = 12$ $4 \times 4 = 16$ $5 \times 4 = 20$ $6 \times 4 = 24$ $7 \times 4 = 28$ $8 \times 4 = 32$ $9 \times 4 = 36$ $10 \times 4 = 40$ $11 \times 4 = 44$ $12 \times 4 = 48$	$0 \times 5 = 0$ $1 \times 5 = 5$ $2 \times 5 = 10$ $3 \times 5 = 15$ $4 \times 5 = 20$ $5 \times 5 = 25$ $6 \times 5 = 30$ $7 \times 5 = 35$ $8 \times 5 = 40$ $9 \times 5 = 45$ $10 \times 5 = 50$ $11 \times 5 = 55$ $12 \times 5 = 60$	$0 \times 6 = 0$ $1 \times 6 = 6$ $2 \times 6 = 12$ $3 \times 6 = 18$ $4 \times 6 = 24$ $5 \times 6 = 30$ $6 \times 6 = 36$ $7 \times 6 = 42$ $8 \times 6 = 48$ $9 \times 6 = 54$ $10 \times 6 = 60$ $11 \times 6 = 66$ $12 \times 6 = 72$
7x table	8x table	9x table	10x table	11x table	12x table
$0 \times 7 = 0$ $1 \times 7 = 7$ $2 \times 7 = 14$ $3 \times 7 = 21$ $4 \times 7 = 28$ $5 \times 7 = 35$ $6 \times 7 = 42$ $7 \times 7 = 49$ $8 \times 7 = 56$ $9 \times 7 = 63$ $10 \times 7 = 70$ $11 \times 7 = 77$ $12 \times 7 = 84$	$0 \times 8 = 0$ $1 \times 8 = 8$ $2 \times 8 = 16$ $3 \times 8 = 24$ $4 \times 8 = 32$ $5 \times 8 = 40$ $6 \times 8 = 48$ $7 \times 8 = 56$ $8 \times 8 = 64$ $9 \times 8 = 72$ $10 \times 8 = 80$ $11 \times 8 = 88$ $12 \times 8 = 96$	$0 \times 9 = 0$ $1 \times 9 = 9$ $2 \times 9 = 18$ $3 \times 9 = 27$ $4 \times 9 = 36$ $5 \times 9 = 45$ $6 \times 9 = 54$ $7 \times 9 = 63$ $8 \times 9 = 72$ $9 \times 9 = 81$ $10 \times 9 = 90$ $11 \times 9 = 99$ $12 \times 9 = 108$	$0 \times 10 = 0$ $1 \times 10 = 10$ $2 \times 10 = 20$ $3 \times 10 = 30$ $4 \times 10 = 40$ $5 \times 10 = 50$ $6 \times 10 = 60$ $7 \times 10 = 70$ $8 \times 10 = 80$ $9 \times 10 = 90$ $10 \times 10 = 100$ $11 \times 10 = 110$ $12 \times 10 = 120$	$0 \times 11 = 0$ $1 \times 11 = 11$ $2 \times 11 = 22$ $3 \times 11 = 33$ $4 \times 11 = 44$ $5 \times 11 = 55$ $6 \times 11 = 66$ $7 \times 11 = 77$ $8 \times 11 = 88$ $9 \times 11 = 99$ $10 \times 11 = 110$ $11 \times 11 = 121$ $12 \times 11 = 132$	$0 \times 12 = 0$ $1 \times 12 = 12$ $2 \times 12 = 24$ $3 \times 12 = 36$ $4 \times 12 = 48$ $5 \times 12 = 60$ $6 \times 12 = 72$ $7 \times 12 = 84$ $8 \times 12 = 96$ $9 \times 12 = 108$ $10 \times 12 = 120$ $11 \times 12 = 132$ $12 \times 12 = 144$

Statutory Government
test: Year 4

Children should log
into TTRS and
regularly practice their
tables so they can
work towards rapid
recall.



Key Information

Items children need & DO NOT NEED

- No gadgets, smart watches;
- Phones are not allowed in school
- No Pokémon or football / collectable cards at all.
- No Labubus
- No stationary

No party bags / food

If a child has birthday we will of course mark it and perhaps read their favourite book/ sing happy birthday but we never give out food or party bags. Please also refrain from doing this in the playground.

'Learners today, leaders tomorrow'



Key Information- Y2 Curriculum

|  | [Our School](#) | [Our Learning](#) | [Parents & Community](#) | [Enrichment](#) | [Contact](#)

Early Years
Whitchurch Curriculum
Year Groups
Useful Websites

Nursery
Reception
Year 1
Year 2
Year 3
Year 4
Year 5
Year 6



Year 2

Welcome to Year 2. We very much see your child's time in Year 2 as a partnership with parents. Please refer to the information on this page to support us with your child's learning both at school and home.

If you have any queries please contact [Ms Nickson](#) or [Ms Doshi](#) (Year 2 Leaders).

Autumn Term

PE days

Children should come to school wearing their PE kit on their PE days. Year 2's PE days this term are:

2DN Monday & Friday

2KK Monday & Friday

2JJ Monday & Friday

2NT Monday & Friday

Homework

Children will have homework (Maths/English and Spellings) every Friday.

All homework is due in on the following Wednesday.

'Learners today, leaders tomorrow'

At Whitchurch, we plan a bespoke and interesting curriculum which centres around your child.

Everything is tied to a central theme; in Year 2, this is **Survival**.

You can find the curriculum overviews on our website ([here](#))



Key Information- Y2 Curriculum



- Please take the time to read through the **Year 2 Curriculum newsletter** which was sent out to parents and carers via School Spider. The curriculum newsletter is sent out **at the end of every half term**.
- Within the newsletter it highlights the **cross curricular links** made within this topic, **what key areas we will be covering** and **suggestions to support learning at home**. It also provides key dates and information of any **upcoming events for Year 2**.
- Please also take the time to visit the school website where you can find our Year 2 Curriculum Overview.



Year 2 Curriculum Overview

	Autumn 1 Fire! Fire! (Survival)	Autumn 2 Coastal Living (Resilience)	Spring 1 Day and Night around the World (Empowerment)	Spring 2 Inspirational Women (Inspirational)	Summer 1 Nature Detectives (Transformation)	Summer 2 Journeys through time and place (Journeys)
Enrichment	Priest Visit Fire Service visit Fire of London workshop Meet the teacher 10/09	Forest School	Place of Worship: Synagogue 2DN Assembly (20/01) 2NT assembly (03/02)	Florence Nightingale Museum 2KK Assembly (03/03) 2JJ Assemble (17/03)		London Boat Trip Sports Day Ragged School Museum
English	Text: Vlad and the Great Fire of London by Kate Cunningham Theme: Develop pupils'	Text: Grandad's Island Theme: Develop pupils' understanding of life in other places in the	Text: The King Who Banned the Dark by Emily Haworth-Booth Theme: Develop pupils'	Text: Rosie Revere, Engineer by Andrea Beaty Theme: Develop pupils'	Text: The Night Gardener Theme: Pupils will explore the themes of	Text: A River by Marc Martin Theme: The theme is about imagination,

'Learners today, leaders tomorrow'



Key Information- Handwriting



Teachers modelling handwriting:

Cursive handwriting to be implemented by all adults when writing in pupils' books, on the whiteboard, on classroom displays and within the SMART Notebook and printed resources.

Pen licence:

To be awarded to any pupil (irrespective of Year group) who is proficient in writing in cursive/joined up, using most of the rules set out by the Nelson Handwriting Scheme.

Regression in handwriting:

This can lead to the pen license being taken away, however, intervention would be put in place to support children in improving writing, before such action is taken.

'Learners today, leaders tomorrow'

Key Information- Handwriting



The Journey to Continuous Cursive: Handwriting Pangrams

A pangram is a sentence that contains every letter of the alphabet at least once.

Read each pangram carefully, trace it three times and then write it independently in your neatest, joined style three times.

The quick brown fox jumps over the lazy dog.

The quick brown fox jumps over the lazy dog.

The quick brown fox jumps over the lazy dog.

The quick brown fox jumps over the lazy dog.



Aa Bb Cc Dd

Ee Ff Gg Hh Ii

Jj Kk Ll Mm

Nn Oo Pp Qq

Rr Ss Tt Uu Vv

Ww Xx Yy Zz

Key Information- Assemblies



Children will have 3 assemblies a week.

- Monday- Themed Assembly
- Wednesday- Singing Assembly
- Friday- Celebration Assembly

Please do discuss the themes of our assemblies with your child and also practice their songs at home.

Celebration Assembly is an opportunity to celebrate your children and all their achievements inside and outside of school, so should you have something your child wishes to share please contact their YTL with their achievements.

Class Assemblies - take place on **Tuesday** mornings at 9:05am

2DN - 14th October 2025

2NT - 2nd December 2025

2KK - 3rd March 2026

2JJ - 5th May 2026

'Learners today, leaders tomorrow'



Key Information- Enrichment



Year 2 Enrichment Activities:

- 15th October – **Great Fire of London workshop** in school
- Visits to, a **synagogue**, the **Florence Nightingale Museum**, and the **Ragged School Museum**
- Trips request a **voluntary contribution**; however, if there are not enough funds, the trip may be cancelled.
- We will ask for **parent volunteers** to support on trips. If we receive more offers than needed, names will be **drawn from a hat**.
- Children will travel by **London Underground**, as they successfully did in Year 1 during the summer.
- If you are experiencing difficulty paying, please speak to your **class teacher** or the **school office**, who will do their best to help.

'Learners today, leaders tomorrow'

Parent Volunteers

- We feel that the involvement of parents in children's education is vital and we encourage active participation in many ways. In whatever way parents offer their time, we are always extremely grateful.
- There are many different ways in which parents can help in school. These include:
 - Helping with literacy (typically listening to children read)
 - Helping with numeracy
 - Sharing your professional skills (for example, if you're a doctor, you might go in to talk to a class whose topic is healthy living)
 - Helping with classroom activities such as cookery
 - Helping on school trips



'Learners today, leaders tomorrow'

WRAPAROUND CARE



WRAPAROUND CARE can be booked via hello@junioradventuresgroup.co.uk and via the link on our school website - [Whitchurch Primary School and Nursery: Wraparound Care](#)

Enrichment clubs

External clubs like Karate, Chess, Robothink, Stage Coach are booked separately and paid for directly to the provider

'Learners today, leaders tomorrow'



Contacting Teachers/the school

- Your child's **class teacher** is the first point of contact.
- Teachers are always happy to discuss your child.
- You can **speak to the teacher at the end of the school day**; if more time is needed, they will arrange an alternative meeting.
- Parents can **email or phone the school office** – please allow up to 48 hours for a response.
- To contact the **team leader**, please email **Ms Nickson or Ms Doshi** at the following address: .

mnickson5@whitchurchps.co.uk

tdoshi4@whitchurchps.co.uk

Depending on your enquiry, she might ask your child's class teacher to respond to you.

Communication

- Remember to read the **weekly newsletter**
- **Important dates and updates** are posted on the school website – **please check regularly**
- Download the **School Spider app** to receive important messages and updates- the school office can help you with this

Important: Please tell us any change of details of people collecting your child

School Office | 020 8951 5380
office@whitchurchprimary.harrow.sch.uk



Whatsapp Groups



Class reps: don't forget to join your class WhatsApp group for updates and messages.

Respectful communication: please keep all conversations professional.

Child-related concerns: only teachers and team leaders can discuss these – always approach your child's class teacher directly and without delay.

Any Questions?

Thank you for attending, and for working in co-operation with us.

We are one team and on the same side- for the benefit of your child.

Any questions?

